





Manufacturer

Bellman & Symfon Group AB
Södra Långebergsgatan 30
436 32 Askim Sweden
Phone +46 31 68 28 20
E-mail info@bellman.com
bellman.com



Revision: BE1470_034MAN012

Date of issue: 2020-10-30

TM and © 2020 Bellman & Symfon AB. All rights reserved.



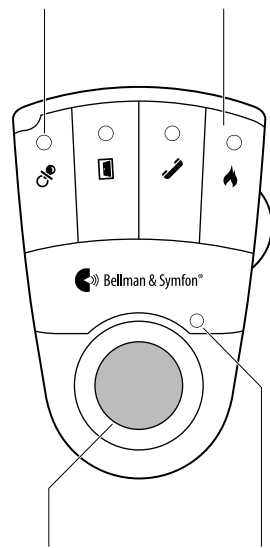
Visit pager receiver

BE1470

Návod k použití	CZ
Benutzerhandbuch	DE
Brugervejledning	DK
User manual	EN
Manual del usuario	ES
Käyttöopas	FI
Mode d'emploi	FR
Εγχειρίδιο χρήσης	GR
Használati útasítás	HU
Manuale utente	IT
Gebruiksaanwijzing	NL
Brukerhåndbok	NO
Instrukcja obsługi	PL
Manual do utilizador	PT
Bruksanvisning	SE
Návod na použitie	SK
Installer's guide	EN

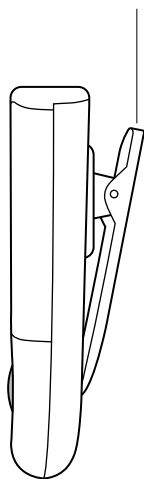
Tasten und Steuerelemente

Visit-LEDs Vorderseiten-Etikett Gürtelclip Batterieabdeckung Batterieauswurf Batteriefach



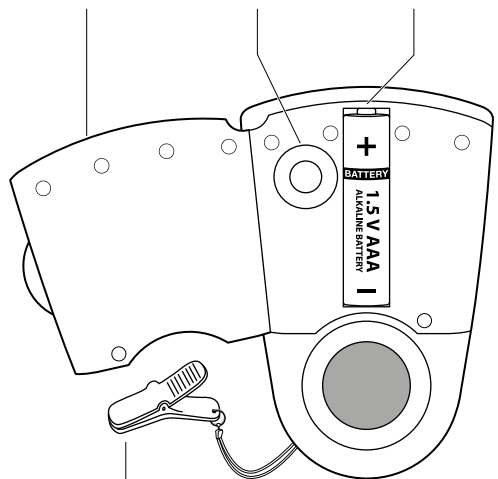
Funktionstaste

Batterie-LED



9

Batterieabdeckung Batterieauswurf Batteriefach



Optionale Sicherungsschnur mit Klemme

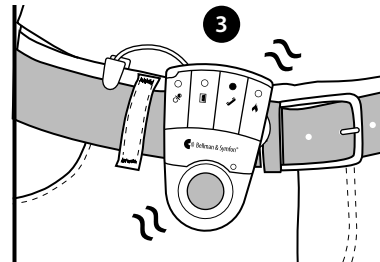
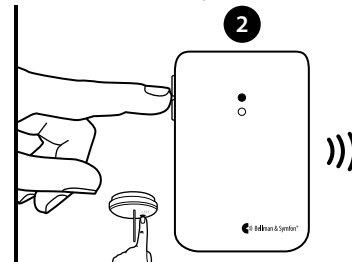
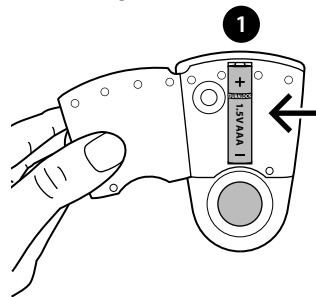
Einführung

Dieses Pager-Empfangsgerät ist Teil des Visit-Smart-Home-Systems, mit dem Sie jederzeit Kontrolle über ihr Zuhause haben. Es benachrichtigt Sie mit einem sanften Vibrationsalarm, wenn es an der Tür läutet oder das Telefon klingelt, wenn Ihr Baby nach Ihnen verlangt oder ein Feuer ausbrechen sollte. Bitte lesen Sie die gesamte Bedienungsanleitung aufmerksam durch, bevor Sie den Pager verwenden.

DE

Erste Schritte

- 1 Öffnen Sie das Batteriefach, legen Sie die Batterie ein und schließen Sie das Fach wieder. Befestigen Sie den Pager mit dem Gürtelclip an Ihrem Gürtel. Für zusätzliche Sicherung gegen Verlust können Sie die beiliegende Sicherungsschnur verwenden.
- 2 Um die Funkverbindung überprüfen zu können, benötigen Sie einen Visit-Sender. Drücken Sie Prüftaste/n des Senders.
- 3 Der Pager beginnt zu vibrieren und die Visit-LED leuchtet auf. Wenn während des Ladens ein Bettalarm angeschlossen ist, vibriert dieser Alarm. Wenn nichts passiert, siehe **Fehlersuche**.



10

Standardmäßiges Signalmuster

Wenn ein Sender aktiviert wird, leuchtet die Visit-LED am Pager auf und der Pager beginnt, mit einer bestimmten Geschwindigkeit zu vibrieren. Dies wird Signalmuster genannt. Der Sender gibt das Signalmuster vor, diese ist standardmäßig wie folgt eingestellt:

Aktivierter Sender	Farbe der Pager-LED	Vibration, BE1470	Vibration, BE1230
▪ Türsender	Grün	Langsam ■□□□	Langsam ■□□□
▪ Taste am Sender	Grün	Langsam ■□□□	Langsam ■□□□
▪ Telefonsender	Gelb	Mittel ■□■□	Langsam ■□□□
▪ Babyphone	Orange	Schnell ■■■■■■	Schnell ■■■■■■
▪ Rauchmelder	Rot	Lang ■■■■□	Lang ■■■■□

Das Signalmuster kann nur an den Sendern geändert werden, siehe separate Bedienungsanleitungen.

Batterie ersetzen

Wenn die Batterie-LED beginnt, gelb zu blinken, ist die Batterie fast leer. So ersetzen Sie die Batterie:

- Öffnen Sie das Batteriefach und drücken Sie die Auswurf-taste, um die Batterie zu entfernen. Legen Sie eine neue Alkaline-Batterie (1,5-V; Typ AAA) ein. Siehe Batteriefach für korrekte Positionierung.

Vorderseiten-Etikett wechseln

Wenn Sie Visit für andere Zwecke verwenden möchten, können Sie das Vorderseiten-Etikett austauschen. So wechseln Sie das Etikett:

- Öffnen Sie das Batteriefach, ersetzen Sie das originale durch das neue Etikett und schließen Sie das Fach wieder.

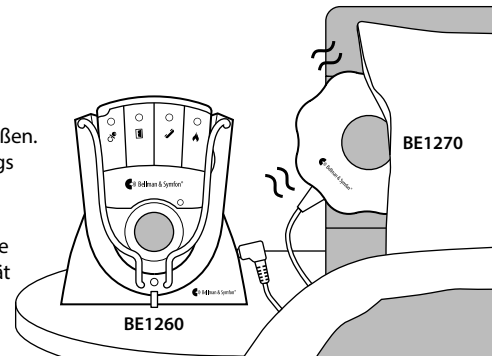
Funkfrequenz ändern

Wenn Ihr Nachbar ebenfalls über ein Visit-System verfügt, können Sie die Funkfrequenz ändern, um sicherzustellen, dass die Systeme sich nicht gegenseitig stören. Siehe **Funkfrequenz ändern** in der Installationsanleitung.

Zubehör

Der Pager kann mit dem folgenden Zubehör ergänzt werden:



- **BE1260 Pager-Ladegerät**
Lädt Ihren Pager über Nacht auf. Sie können es auf dem Nachttisch platzieren und maximal zwei Bettalarne anschließen. Bitte beachten Sie, dass der Pager während des Ladevorgangs nicht vibriert, die Visit-LED funktioniert jedoch wie gewohnt.
- **BE1270 Bettalarm**
Weckt Sie durch Vibrationen, falls etwas passiert, während Sie schlafen. Schließen Sie den Bettalarm an das Pager-Ladegerät an und schieben Sie ihn unter das Kopfkissen oder unter die Matratze Ihres Betts.



Warnung! Bei Verwendung des Pager-Ladegeräts dürfen Sie **AUSSCHLIESSLICH NACHLADBARE NiMH-BATTERIEN** im Pager verwenden. Nicht-nachladbare Batterien laufen aus, wenn der Pager in das Ladegerät eingelegt wird und die auslaufende Batteriesäure beschädigt die Elektronik. Daraus resultierende Schäden sind von der Garantie ausgeschlossen.

Fehlersuche

Die meisten Probleme lassen sich mit den nachstehenden Ratschlägen schnell beheben.

Wenn	Lösung
Der Pager scheint ausgeschaltet zu sein.	<ul style="list-style-type: none">Die Batterie ist leer. Ersetzen Sie sie mit einer Alkaline-Batterie (1,5 V; AAA).  Wichtig! Wenn Sie über ein Pager-Ladegerät verfügen, dürfen Sie ausschließlich nachladbare NiMH-Batterien (1,2 V; AAA) für den Pager verwenden.
Die Batterie-LED blinkt gelb.	<ul style="list-style-type: none">Der Batterieladestand ist niedrig. Ersetzen Sie sie mit einer Alkaline-Batterie (1,5 V; AAA).  Wichtig! Wenn Sie über ein Pager-Ladegerät verfügen, dürfen Sie ausschließlich nachladbare NiMH-Batterien (1,2 V; AAA) für den Pager verwenden.
Der Pager reagiert nicht, wenn ein Sender aktiviert wird.	<ul style="list-style-type: none">Überprüfen Sie die Batterien der Sender.Verringern Sie den Abstand zwischen Pager und Sendern, um sicherzustellen, dass sie in Reichweite sind.Überprüfen Sie, ob der Pager auf dieselbe Funkfrequenz eingestellt ist wie die anderen Geräte im Visit-System, siehe Funkfrequenz ändern in der Installationsanleitung.
Der Pager wird ohne ersichtlichen Grund aktiviert.	<ul style="list-style-type: none">Vermutlich ist in der Nähe ein anderes Visit-System installiert, das ihr System aktiviert. Ändern Sie bei allen Geräten die Funkfrequenz (siehe Funkfrequenz ändern in der Installationsanleitung).

Technische Informationen

Abmessungen	H 86 mm x B 57 mm x T 29 mm
Gewicht	70 g inkl. Batterie
Strom	Netzstrom: 7,5 V DC 1500 mA mit BE1260 Ladegerät-Zubehör Batteriestrom: 1 x Alkaline (1,5 V; AAA) oder 1 x nachladbare NiMH-Batterie (1,2 V; AAA)
Stromverbrauch	Aktiv: ≤ 220 mA, Ruhezustand: ≤ 1 mA
Betriebsdauer	Mit Alkaline-Batterie: 2-3 Wochen, Mit NiMH-Batterie: ca.1 Woche, (wenn vollständig geladen)
Aktivierung	Über einen Visit-Sender.
Funkfrequenz	314,91 MHz, 433,92 MHz und 868,30 MHz, abhängig von der Region.
Reichweite	50 - 250 m, abhängig von Funkfrequenz und Gebäudestruktur bzw. -eigenschaften
Im Feld	BE1470 Pager, Gürtelclip, Sicherungsschnur und zweites Vorderseiten-Etikett
Zubehör	BE1260 Pager-Ladegerät, BE1270 Bettalarm
Umgebung	Nur für den Innengebrauch.
Vorschriften	Erfüllt CE, FCC & IC, RCM, Der Grüne Punkt

Zusätzliche Informationen

Verwendung,Transport und Lagerung	Informationen finden Sie im Installer's Guide .
Wartung und Reinigung	Wartungsfrei. Reinigung mit einem nur leicht feuchten Tuch. Nicht für den Wiedereinsatz durch andere Personen vorgesehen.
Sicherheit und Vorschriften	Informationen finden Sie im Installer's Guide .
Service und Support	Informationen finden Sie im Installer's Guide .

Installer's guide

Visit pager receiver in depth information



101 Buttons and controls

102 Getting started

103 Using the pager and the accessories

105 Changing the radio key

106 Advanced programming

107 Resetting the pager

107 Testing the connection

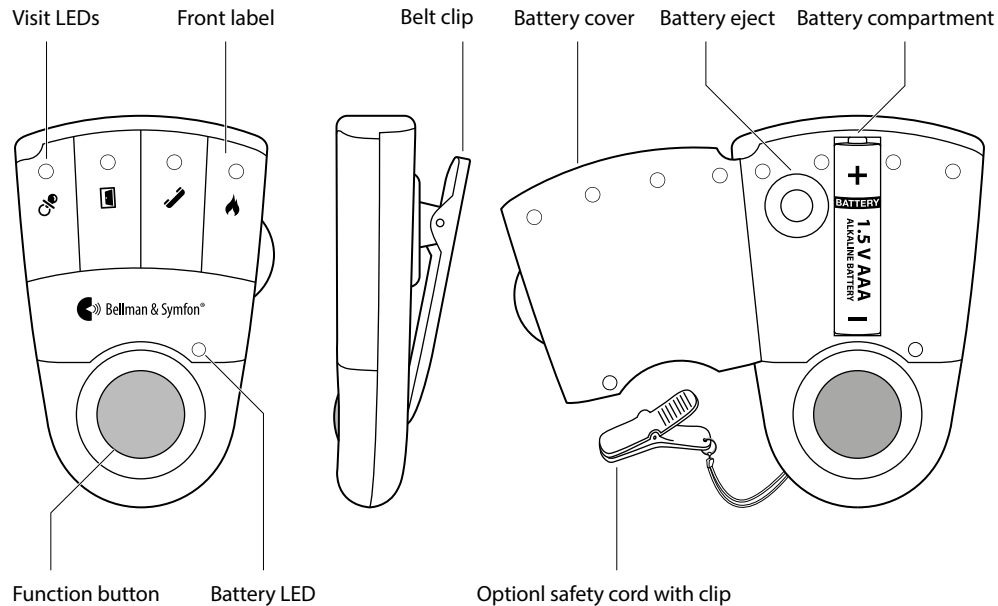
108 Troubleshooting

109 Technical information

110 Care and cleaning

111 Important safety instructions

Buttons and controls

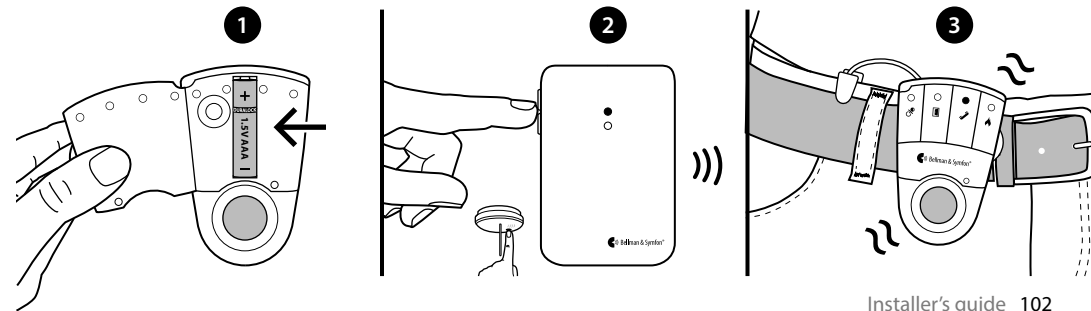


Introduction

This pager receiver is part of the Visit smart home system that helps you to keep tabs on your home. It alerts you with gentle vibrations when the doorbell or telephone rings, when your baby needs you or if a fire should occur. Please read through the entire user manual before you start using the pager.

Getting started

- 1 Open the battery cover, fit the battery and close the cover again. Attach the pager to your belt using the belt clip. For extra security, use the supplied safety cord.
- 2 To test the radio link you need a Visit transmitter. Press the test button/s on the transmitter.
- 3 The pager starts to vibrate and lights up a Visit LED. If a bed shaker is connected during charging, it will vibrate. If nothing happens, see **Troubleshooting**.



Default signal pattern

When a transmitter is activated, the pager lights up a Visit LED and starts to vibrate with a certain pace. This is called signal pattern. The transmitters determine the signal pattern, and the default is as follows:

Activated transmitter	Pager LED colour	Vibration, BE1470	Vibration, BE1230
▪ Door transmitter	Green	Slow ■□□□	Slow ■□□□
▪ Push button transmitter	Green	Slow ■□□□	Slow ■□□□
▪ Telephone transmitter	Yellow	Medium ■□■□	Slow ■□□□
▪ Baby monitor	Orange	Fast ■■■■■■	Fast ■■■■■■
▪ Smoke alarm	Red	Long ■■■■□	Long ■■■■□

Changing the signal pattern

The signal pattern can only be changed on the transmitters. See the **Installer's guide** in the transmitter user manual.

Replacing the battery

When the battery LED starts to blink in yellow, the battery is nearly depleted. Here is how you replace it:

- Open the battery cover and press the battery eject button to remove the old battery. Insert a new 1.5 V AAA type alkaline battery, see the battery compartment for correct positioning.

Changing the front label

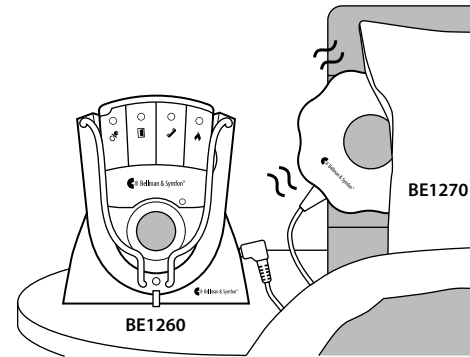
If you want to use Visit for other purposes, the pager front label can be replaced. Here is how it's done:

- Open the battery cover, replace the original label with the customized one and close the cover again.

Accessories

The pager can be complemented with the following accessories:

- **BE1260 Pager charger**
Charges your pager during the night. Place it on the bedside table and connect up to two bed shakers. Please note that the pager will not vibrate when it's charging, but the Visit LEDs will act as usual.
- **BE1270 Bed shaker**
Wakes you with vibrations if anything happens while you are asleep. Connect it to the pager charger and slide it under your pillow or mattress.



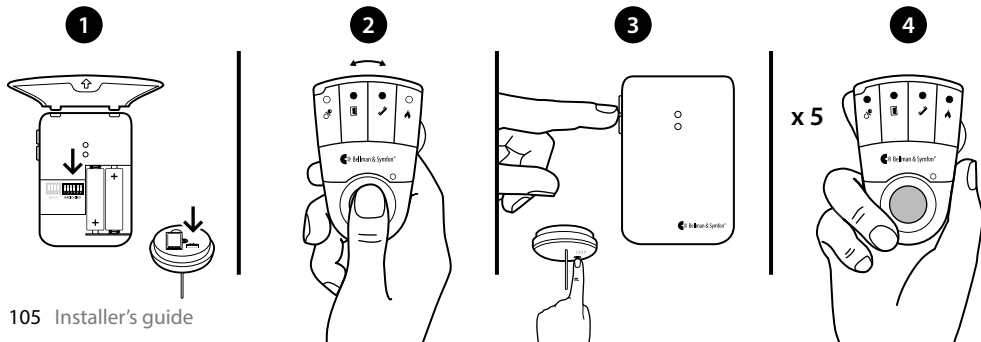
Warning! When using the pager charger **ONLY USE RECHARGEABLE NiMH BATTERIES** in the pager. Non-rechargeable batteries will start to leak if the pager is placed in the charger and the battery acid will damage the electronics. The resulting damage is not covered by warranty.

Changing the radio key

If a neighbor also has a Visit system, you can change the radio key so that your systems don't interfere. The radio key is changed on the **transmitters** and must be set to the same position on all units in the system.

Here is how you change the radio key

- 1 Open the transmitter cover and move any radio key switch/es to the up=on position to change the radio key. See the transmitter user manual for further information.
- 2 Press and hold the function button on the pager until the green and yellow LEDs blink alternately. Release the button.
- 3 Press the test button/s on the transmitter within 30 seconds to send the new radio key.
- 4 All Visit LEDs blink 5 times to show that the radio key has been changed. It then returns to normal mode.



Advanced programming

By using advanced programming, you can customize the signal pattern from a specific transmitter and event, displaying the LED colour and vibration pattern of your choice. The advanced programming overrides the radio key and pairs the units via the serial number. Please note that smoke alarms cannot be programmed for safety reasons.

Note: The transmitter must be activated as it is intended to be used in the system to generate the right signal. This means that you can't always use the transmitter test button, see **Default signal pattern** for the relevant transmitter.

Here is how you program the pager:

- 1 Press and hold the function button on the pager. The green and yellow Visit LEDs will start to blink alternately. While still holding down the button, activate the desired transmitter as intended. The yellow battery LED on the pager will light up to indicate that you are in advanced programming mode. Release the button.
- 2 Scroll through the different **Visit LED options** by pressing the function button on the pager. Select the desired Visit LED pattern by holding down the function button until the battery LED goes out and lights up again.
- 3 Scroll through the different **vibration options** by pressing the function button on the pager. Select the desired vibration pattern by holding down the function button until the battery LED goes out and lights up again.
- 4 The pager will now show the new Visit LED colour and vibration pattern. Press the function button briefly to end the demonstration. After a short while, the pager will return to normal mode.



Deleting the advanced programming

Follow the procedure below to delete the advanced programming:

- 1 Hold down the function button on the pager until the green and yellow Visit LEDs blink alternately. Release the button.
- 2 Press the function button on the pager 3 times in quick succession.
- 3 All Visit LEDs will light up for ~2 seconds to show that it has been deleted.

Troubleshooting

Most problems with the pager can be solved quickly by following the advice below.

If	Try this
The pager seems to be turned off	<ul style="list-style-type: none">▪ The battery is depleted. Replace it with a 1.5V AAA alkaline battery.  Important! If you have a pager charger, only use a rechargeable 1.2 V AAA NiMh battery in the pager.
The battery LED blinks in yellow	<ul style="list-style-type: none">▪ The battery level is low. Replace it with a 1.5V AAA alkaline battery.  Important! If you have a pager charger, only use a rechargeable 1.2 V AAA NiMh battery in the pager.
The pager does not respond when a transmitter is activated	<ul style="list-style-type: none">▪ Check the batteries in the transmitters.▪ Move the pager closer to the transmitter to make sure it's within radio range.▪ Check that the pager is set to the same radio key as the other units in the Visit system, see Changing the radio key.
The pager is activated for no apparent reason	<ul style="list-style-type: none">▪ There is probably another Visit system installed nearby that triggers your system. Change the radio key on all units, see Changing the radio key.

Technical information

Dimensions and weight	H 86mm (3.4") x W 57mm (2.2") x D 29mm (1.1"). Weight: 70 g (2.5 oz.) incl. battery
Power supply	Mains power: 7.5 V DC 1500 mA via the BE1260 charger accessory Battery power: 1 x 1.5 V AAA alkaline or 1 x 1.2 V AAA NiMH rechargeable battery
Power consumption	Active: ≤ 220 mA, Idle position: ≤ 1 mA
Operating time	Alkaline battery ~ 2–3 weeks, NiMH battery ~ 1 week, fully charged
Activation	Via Visit transmitter
Radio frequency	314.91 MHz, 433.92 MHz or 868.3 MHz depending on region
Coverage	50 – 250m (55 – 273yd) depending on radio frequency. Coverage is reduced by walls, large objects and other radio transmitters.
Accessories	BE1260 Pager charger, BE1270 Bed shaker
In the box	BE1470 Pager, Belt clip, safety cord and an extra front label
Environment	For indoor use only.
Regulatory	Fulfil CE, FCC & IC, RCM, Der Grüne punkt

Additional information

Operating temperature	0° – 35° C, 32° – 95° F
Transport and storage temp.	-10° – 50° C, 14° – 122° F
Relative humidity	15% – 90% (non condensing)
Maintenance and cleaning	Maintenance free. Clean with a dry cloth. Don't use household cleaners, aerosol sprays, solvents, alcohol, ammonia, or abrasives.
Warranty and service	If the product appears to be damaged or doesn't function properly, follow the advice in this booklet. If it still doesn't function properly, contact your retailer for info about obtaining warranty service.

Care and cleaning



Please note: Failure to follow these care and cleaning instructions could result in damage to the pager and void the warranty.

Using connectors and jacks

Never force a connector into a jack. Check for obstructions on the jack. If the connector and jack don't join with reasonable ease, they probably don't match. Make sure that the connector matches the jack and that you have positioned the connector correctly in relation to the jack.

Using the pager

Operate the pager in a dry environment where the temperature is always between 0° and 35° C (32° and 95° F). If the pager gets wet, it should no longer be regarded as reliable and should therefore be replaced.

Cleaning

To clean the pager, use a soft, lint-free cloth. Avoid getting moisture in openings. Don't use window or household cleaners, aerosol sprays, solvents, alcohol, ammonia, or abrasives.

Service and warranty

If the pager appears to be damaged or doesn't function properly, follow the instructions in this user guide. If the pager still doesn't function as intended, contact your local dealer for information on service and warranty.

Additional information

For information about the proper disposal of the pager, and for other important safety and regulatory compliance information, see the section **Important safety instructions** on the following page.

Important safety instructions

This section contains important information about safety, handling, disposal, recycling and warranty.



Please note: Read all safety information and operating instructions below before using the pager.
Keep the user manual for future use.

Warning!

- Failure to follow these safety instructions could result in fire, electric shock, or other injury or damage to the product or other property.
- Do not use or store this pager near any heat sources such as naked flames, radiators, ovens or other devices that produce heat.
- Do not dismantle the pager; there is a risk of electric shock. Tampering with or dismantling the pager will void warranty.
- Be aware that alarms can be missed if the batteries run out.
- Only refer damaged or faulty pagers to qualified service personnel.
- The pager is intended to be used as part of a home alerting system but should not be used as the only security in life-threatening situations.
- The pager has no power switch. In order to disconnect the product, the battery must be removed.
- The pager is designed for indoor use only.
- Do not expose the pager to moisture.
- Protect the pager from shocks during storage and transport.

Model, type and classification

The information is available inside the pager's front lid.

Product disposal and recycling information



The symbol to the left means that according to local laws and regulations your product should be disposed of separately from household waste. When this product reaches its end of life, take it to a collection point designated by local authorities. The recycling of your product will help conserve natural resources and ensure that it is recycled in a manner that protects human health and the environment.

Battery disposal information



This symbol indicates that the product contains batteries that according to local laws and regulations must be disposed of separately from household waste. Take used batteries to a collection point designated by local authorities.

Support centers

If you have any questions, please contact the Bellman & Symfon support team.

FCC compliance statement

This device complies with Part 15 of the FCC Rules. Operation is subject to the following two conditions: (1) this device may not cause harmful interference, and (2) this device must accept any interference received, including interference that may cause undesired operation.

Warning: Changes or modifications to this unit not expressly approved by the party responsible for compliance could void the user's authority to operate the equipment.

Note: This equipment has been tested and found to comply with the limits for a Class B digital device, pursuant to part 15 of the FCC Rules. These limits are designed to provide reasonable protection against harmful interference in a residential installation. This equipment generates uses and can radiate radio frequency energy and, if not installed and used in accordance with the instructions, may cause harmful interference to radio communications. However, there is no guarantee that interference will not occur in a particular installation. If this equipment does cause harmful interference to radio or television reception, which can be determined by turning the equipment off and on, the user is encouraged to try to correct the interference by one or more of the following measures:

- Reorient or relocate the receiving antenna.
- Increase the separation between the equipment and receiver.
- Connect the equipment into an outlet on a circuit different from that to which the receiver is connected.
- Consult the dealer or an experienced radio/TV technician for help.

Industry Canada statement

This device contains licence-exempt transmitter(s)/ receiver(s) that comply with Innovation, Science and Economic Development Canada's licence-exempt RSS(s). Operation is subject to the following two conditions:

- (1) This device may not cause interference.
- (2) This device must accept any interference, including interference that may cause undesired operation of the device.

L'émetteur/récepteur exempt de licence contenu dans le présent appareil est conforme aux CNR d'Innovation, Sciences et Développement économique Canada applicables aux appareils radio exempts de licence. L'exploitation est autorisée aux deux conditions suivantes :

- (1) L'appareil ne doit pas produire de brouillage;
- (2) L'appareil doit accepter tout brouillage radioélectrique subi, même si le brouillage est susceptible d'en compromettre le fonctionnement.

This Class B digital apparatus complies with the Canadian ICES-003.

IC: 6693A-BERX